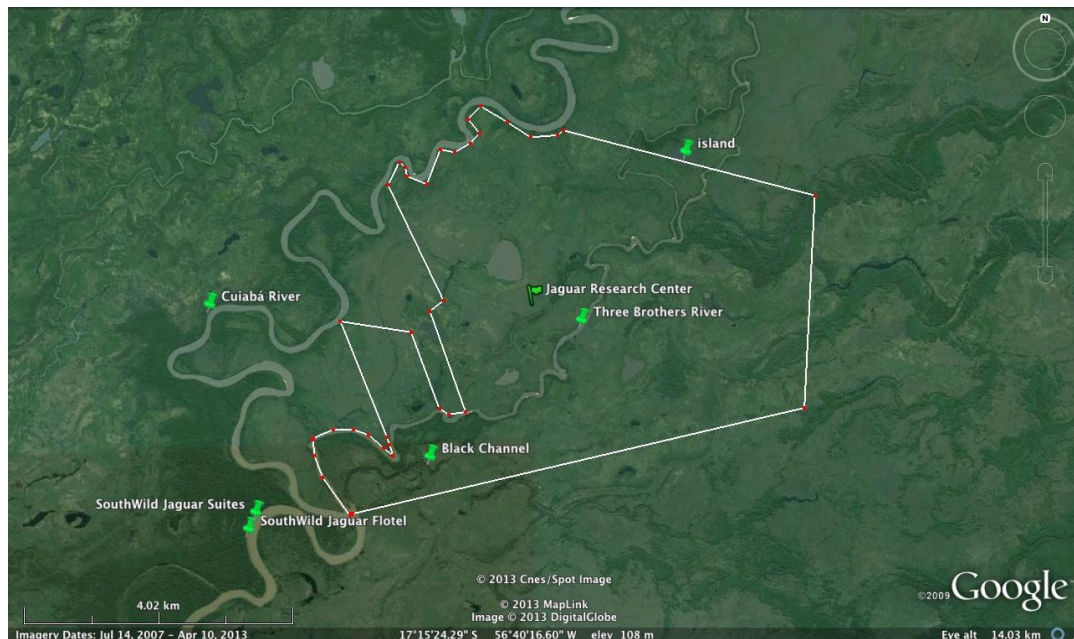


“Jaguarland” in Pantanal, Brazil

SouthWild’s “Jaguar Extreme” Fixed Departures are the guaranteed, affordable way to enjoy Jaguars and Giant Otters in the wildest heart of the fabulous Pantanal: The Jaguar Research Center Reserve.



“Jaguar Extreme”: SouthWild’s 12-square-mile Jaguar Research Center Reserve

This SouthWild-owned reserve covers 3,025 hectares (7,467 acres), making it the largest privately-owned Jaguar conservation area on the Three Brothers River, the most Jaguar-rich watershed in the world. This reserve also includes 100% of the neighboring, Jaguar-packed “Black Channel” (“*Corixo Negro*” in Portuguese), a locality that appears in many on-line Jaguar reports.

After nine years of systematically testing forest camps, fishing hotels, and sport-fishing ships, SouthWild concluded that specially-adapted ships or floating hotels (“flotels”) anchored in the center of the best Jaguar action offer the most comfortable, convenient, and safest way to be close to the cats. Cruising in ships for long stretches of rivers is only 1% as good for seeing Jaguars as being anchored in the middle of the densest population of habituated Jaguars.

These flotels are most comfortable and convenient because they float without rocking within 10 minutes by boat of most Jaguar sightings of the Three Brothers and Black Channel. Jaguars even walk in broad daylight on the riverbank within 5 metres of SouthWild’s flotels.

These flotels are safer than riverbank camps or hotels, as Jaguars patrol riverbanks near hotels and camps in search of prey, but never swim out to flotels. Even if they did, flotel guest rooms have hardwood doors and metal walls, making them impervious to any Jaguar.

Our floating hotels feature resident research biologists giving scientific lectures and maintaining SouthWild’s eight-year-old Jaguar face dossier. This unique, painstaking dossier now documents the face spot patterns of over 100 wild Jaguars, of which our guests see about 2.5 cats per day or 36 in each May to December “Jaguar Season”.

SouthWild's Viral Video



“Mick Jaguar”, Superstar

Paul Donahue

On 16 August 2013, 25 SouthWild guests video-recorded and photographed a seven-year-old male cat called “Mick Jaguar” as he swam stealthily towards an unsuspecting, 7-foot-long caiman, which he promptly pounced on, killed, and dragged away.

Please google the words “Jaguar Caiman” and click on the first and second links.

The first link went live on 20 September 2013 and by 1 December had 37 million hits.

Four pages of Google search results show scores of major media outlets around the world that featured videos and stills of this cat attack. National Geographic and The New York Times Company syndicated and published worldwide photos by Paul Donahue, one of SouthWild’s most-experienced, resident Jaguar researchers.



Rogues' Gallery: A page from SouthWild's Jaguar Face Dossier

All four air-conditioned SouthWild flotels, our Jaguar Tugboat, and our Jaguar Machine Boat all are anchored for the entire season only 2.4km below the mouth of the Three Brothers River, the global epicenter of the world's highest recorded density of Jaguars.

Two of SouthWild's four Jaguar Flotels have WIFI internet, the only ships in the Jaguar Zone with that important amenity. Our no-internet flotels are a two-minute boat ride from our internet flotels.

Our THREE guest flotels have banished night time generators to our separate Jaguar Tugboat and Jaguar Machine Boat. This unique precaution makes for quiet, vibration-free sleeping. In 2013, no other ships in or near the SouthWild's Jaguar Research Center Reserve took these important steps to eliminate night-time generator noise and vibration. Our fourth flotel is simpler and is reserved exclusively for tour leaders and long-stay, international film crews.

SouthWild is the only company with any of the following: resident biologists, scientific lectures, up-to-date Jaguar face dossier, a 11-square-mile private Jaguar reserve, off-site nighttime generators, a fully-screened, "*al fresco*" dining room (complete with large fans and an exercise treadmill), and a new, large-room "Jaguar Suites Flotel".

The Jaguar Suites Flotel features custom-designed, extremely spacious, 30-square-metre (323-square-foot) rooms, clearly the finest, most convenient guest rooms of any terrestrial or floating lodge in the entire Pantanal. Each Jaguar Suites room has a "ginormous", 3.6-metre-wide, floor-to-ceiling picture window that slides open to give you access to your own private, 5m x 1.6m, screened porch. No other rooms anywhere in Pantanal afford the scenic view offered by Jaguar Suites, namely the 100-m-wide Cuiabá River and the wilderness of the 270,00-acre Meeting-of-the-Waters State Park (MOWSP). This park is 250% the size of the largest Costa Rican park and harbors a higher density of Jaguars than anywhere else on Earth. In fact, MOWSP certainly harbors more Jaguars than all of Costa Rica. Our Jaguar Research Center Reserve is a private inholding in the state park and represents the most famously Jaguar-rich part of the park.



A Jaguar Suite: 30m² (323ft²), huge picture window, 2 beds 128cm-wide (50 inches)

Fixed Departures

Save money when 7-11 guests share:

- ✓ A SouthWild guide with our unique iPad with our in-house Pantanal bird photo guide and many other apps;
- ✓ air-conditioned transfer vehicles & open, roofed photo-safari trucks;
- ✓ mobile-phone-equipped wildlife boats at SouthWild Pantanal Lodge;
- ✓ radio-equipped, articulated-umbrella-equipped Jaguar search boats at SouthWild Jaguar Flotels;
- ✓ Special scientific lectures by SouthWild resident Jaguar researcher.

Start dates of 2014

Package	May	June	July	August	September	October	November
Jaguar Extreme	31	30	8, 25, 30	1, 3, 7, 25, 27	4, 25, 28	2, 6, 18, 25	2, 5, 11, 17
Jaguar Express during World Cup	-	8, 14, 18, 22, 25	-	-	-	-	-

Jag. Extreme always 6 nts, so 31 May in, 6 June out. J. Express is shorter, to fit World Cup. See list

Jaguar Extreme 31 May in, 06 June out after breakfast
Jaguar Extreme 30 June in, 6 July out after breakfast
Jaguar Extreme 08 July in, 14 July out after breakfast
Jaguar Extreme 25 July in, 31 July out after breakfast
Jaguar Extreme 30 July in, 05 Aug out after breakfast
Jaguar Extreme 01 Aug in, 07 Aug out after breakfast
Jaguar Extreme 03 Aug in, 09 Aug out after breakfast
Jaguar Extreme 07 Aug in, 13 Aug out after breakfast
Jaguar Extreme 25 Aug in, 31 Aug out after breakfast
Jaguar Extreme 27 Aug in, 02 Sep out after breakfast
Jaguar Extreme 04 Sep in, 10 Sep out after breakfast
Jaguar Extreme 25 Sep in, 01 Oct out after breakfast
Jaguar Extreme 28 Sep in, 04 Oct out after breakfast
Jaguar Extreme 02 Oct in, 08 Oct out after breakfast
Jaguar Extreme 06 Oct in, 12 Oct out after breakfast
Jaguar Extreme 18 Oct in, 24 Oct out after breakfast
Jaguar Extreme 25 Oct in, 31 Oct out after breakfast
Jaguar Extreme 02 Nov in, 08 Nov out after breakfast
Jaguar Extreme 05 Nov in, 11 Nov out after breakfast
Jaguar Extreme 11 Nov in, 17 Nov out after breakfast
Jaguar Extreme 17 Nov in, 23 Nov out after breakfast

SouthWild

Jag Express 08 June in, 13 June out in morning to Cuiabá
Jag Express 14 June in, 17 June out in morning to Cuiabá
Jag Express 18 June in, 21 June out in morning to Cuiabá
Jag Express 22 June in, 24 June out in morning to Cuiabá
Jag Express 25 June in, 29 June out to Cuiabá by noon



Private and Customized Departures

SouthWild can always design and operate private, customized departures for the Jaguars. Please ask our team of travel planners for details.



Young Jaguar "Patricia" concentrates, stalking a riverbank caiman, captivating a boatload of visitors

National Geographic TV and BBC's new "Wild Brazil" series both chose SouthWild's flotels as the best location for filming both Jaguars and Giant Otters for their 2013 and 2014 specials, respectively. Finally, SouthWild is entering its ninth year of guaranteeing Jaguar sightings, the only such guarantee anywhere.

Our unique "Jaguar Guarantee": Our Jaguar Extreme departures achieved 100% Jaguar success in 2011, 2012, and 2013. We are the only operators in the world to offer a \$1,000 USD refund per person if you don't see a Jaguar.

Accommodations

In 2013, our guests enjoyed an average of 2.5 Jaguar sightings per day, a 50% increase over past rates of sighting.

Many guests were astounded by 4 to 6 Jaguar sightings in one day. One group had 12 Jaguar sightings between breakfast and lunch. A group of guests in late October/early November 2013 marveled at 25 sightings in a five-night stay at SouthWild's Jaguar Suites and Jaguar Flotel I.

We also are the only operators in the world who insist on having at least three radio-equipped boats out on the water for most of each day, regardless of the number of guests.

SouthWild Pantanal Lodge



SouthWild Pantanal Lodge







With over 80 species of the 400 birds of the Pantanal weighing more than a pound (454 grams), the Pantanal boasts the longest list of large birds in the world and is one of the birdiest locations on the planet. **SouthWild Pantanal** is the ecolodge that is favored by serious PhD ornithologists as the top birding lodge in the entire Pantanal. Sitting on 1,538 hectares (3,780 acres) of seasonally-flooded savannas and bird-rich gallery forest on the banks of the intimate Pixaim River, SWP lies 66 km down the Transpantaneira Road, which itself is the only long transect that penetrates the very heart of this great, UK-sized wetland. From our transfer vehicles, boats on the river, and in walks in our gallery forest and surrounding the lodge, you can enjoy excellent views of iconic, spectacular South American birds such as Toco Toucan, Hyacinth Macaw, Jabiru Stork, five different species of kingfishers, Orange-backed Troupial, Great Potoo, large numbers of egrets, seven species of herons, four species of ibises, hawks that gracefully snatch fish from the water's surface, snail kites, and many other species. Fully 180 of the 400 birds species in the Pantanal floodplain, *sensu strictu*, are easily visible from cars and boats without having to dig them out of closed brush or forest.

One of our two special wildlife observation towers is strategically located at 16 metres from an 11-metre-high Jabiru Stork nest, allowing eye-level shots of these, the tallest flying birds in Latin America.

Turning to other classes of large vertebrates, SWP also features scores of habituated Capybaras (55-kilo guinea pigs) as well as Marsh Deer, Brazilian Tapirs, three species of monkeys, Giant River Otters, Crab-eating Foxes, Coatimundis, Ocelots, hundreds of Paraguayan Caimans, and quite often even Jaguars.

Secluded at the end of a private, two-mile-long driveway, SouthWild Pantanal features 15 air-conditioned rooms with private, hot-shower bathrooms. As the lodge is a modified, old-style ranch house, its wide, wrap-around porch and airy, all-screen dining room (unique in all Pantanal) preserve a traditional flavor of charm and quaintness that is in keeping with the private, natural setting on the very banks of the 60m-wide Pixaim River.

In addition to the charm of the location, SWP also boasts the finest, most scientifically-laid-out gallery forest trail system in all the Pantanal, and without the mess or risk of sharing this rarest of all Pantanal habitats with cattle, which are kept hundreds of metres away.

SouthWild Jaguar Flotel



10 double-occupancy, air-conditioned rooms with private, hot-shower bathrooms

4 of 10 rooms with double beds

Large, enclosed, air-conditioned dining room with large-screen TV for nightly scientific lectures

Large fully-screened outside dining room with large fans and exercise treadmill

Off-site sleeptime generator to prevent noise and vibration

WIFI Internet



SouthWild Jaguar Flotel II



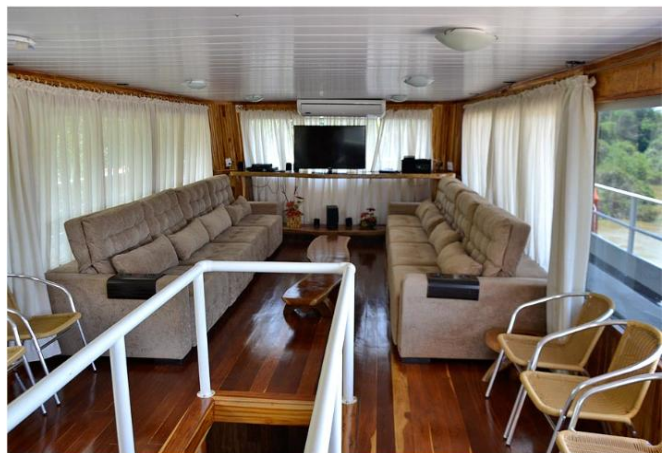
8 brand-new, double-occupancy, air-conditioned bedrooms with private, hot-shower bathrooms

4 of 8 bedrooms with double beds

Third-floor, enclosed, air-conditioned lounge with large-screen TV for nightly scientific lectures

Off-site sleeptime generator to prevent noise and vibration

WIFI Internet available at nearby SouthWild Jaguar Flotel I (with boat shuttle service)



SouthWild Jaguar Suites



WIFI in all rooms

30 square-metre rooms (323-square-foot)

Off-site sleeptime generator to prevent noise and vibration

50-inch-wide beds fasten together to make “super king bed”

22 easy-access electrical sockets mostly waist-level above two wide, long work desks for using laptops to edit photos

Huge, sliding glass doors open onto private screened porch with view across the Cuiabá River to wild pantanal forests

The only guest rooms in Latin America with two active cooling systems: split air-conditioner or flow-through fan pulling fresh night air across the beds

Latin America’s (maybe the world’s) cleverest, most effective, most user-friendly mosquito nets, which can be deployed or opened effortlessly in only seconds without risk of ripping

Special “Jaguar window” on port (forest) side of ship along with 2-way radio to call for room service and for SouthWild to call you when a Jaguar is about to walk by on the riverbank.

Prize-winning photographers choose SouthWild



Joe McDonald

SouthWild's guests include the world's most sophisticated, prize-winning nature photographers. These demanding professionals choose SouthWild for many reasons, one of which is that our highly-experienced boat drivers have more contact time with wild Jaguars than any other humans in the history of the world (over 3,000 hours in the case of our top drivers). Thus, SouthWild boat drivers are the most expensive and the best in the business in terms of predicting Jaguar movements and behavior. Our boat drivers's deep experience results in our guests being perfectly-positioned to take prize-winning photos of explosive Jaguar behavior that is all over in a split second.

The latest examples of outstanding images from leading photographers who are SouthWild clients include not just "Mick Jaguar's" now-famous August 2013 attack on the hapless caiman, but more recently, Joe McDonald taking top prize in September 2013 in the world's most prestigious wildlife photography competition: the London-based "Nature Photographer of the Year". Joe, who has been photographing the cats of the Jaguar Research Center Reserve every year since 2008, won the top prize with a simply jaw-dropping image of a violent lover's spat involving a courting pair of Jaguars on the banks of the Three Brothers River.



SouthWild Rates

Per person prices in U.S. dollars in double occupancy at SouthWild Pantanal Lodge, SouthWild Jaguar Flotels I and II, and SouthWild Jaguar Suites.

Prices are for number of people reserving at one moment, not for final size of group for a particular departure.

Age restriction: children under 12 are not accepted for Fixed Departure groups, but are welcome in private, family groups.

If you spend 3 nights and 4 full days at SouthWild Jaguar Flotel I and II or Jaguar Suites and do not see a Jaguar, we either refund \$1,000 USD per guest, or we offer 3 free days within 2 years.

JAGUAR EXTREME 6n/7d - FIXED DEPARTURE			
Accommodation	2-3 people	4-8 people	Single Supplement
Jaguar Flotel I or II	\$3995 USD	\$3595 USD	\$620 USD
Jaguar Suites	\$5265 USD	\$4745 USD	\$815 USD

JAGUAR EXTREME 6n/7d - PRIVATE DEPARTURE			
Accommodation	2-3 people	4-8 people	Single Supplement
Jaguar Flotel I or II	\$4375 USD	\$3980 USD	\$750 USD
Jaguar Suites	\$5750 USD	\$5215 USD	\$950 USD

JAG EXPRESS 5n/6d - FIXED DEPARTURE

Accommodation	2-3 people	4-8 people	Single Supplement
Jaguar Flotel I or II	\$2995 USD	\$2665 USD	\$570 USD
Jaguar Suites	\$4500 USD	\$3995 USD	\$725 USD

JAG EXPRESS 5n/6d - PRIVATE DEPARTURE

Accommodation	2-3 people	4-8 people	Single Supplement
Jaguar Flotel I or II	\$3390 USD	\$2995 USD	\$650 USD
Jaguar Suites	\$4900 USD	\$4400 USD	\$700 USD

JAGUAR EXTREME 4n/5d - FIXED DEPARTURE

Accommodation	2-3 people	4-8 people	Single Supplement
Jaguar Flotel I or II	\$2500 USD	\$2200 USD	\$510 USD
Jaguar Suites	\$3995 USD	\$3400 USD	\$665USD

JAGUAR EXTREME 4n/5d - PRIVATE DEPARTURE

Accommodation	2-3 people	4-8 people	Single Supplement
Jaguar Flotel I or II	\$2950 USD	\$2550 USD	\$560 USD
Jaguar Suites	\$4400 USD	\$3900 USD	\$700 USD

JAG EXPRESS 3n/4d - FIXED DEPARTURE

Accommodation	2-3 people	4-8 people	Single Supplement
Jaguar Flotel I or II	\$1995 USD	\$1690 USD	\$400 USD
Jaguar Suites	\$3300 USD	\$2800 USD	\$570 USD

JAG EXPRESS 3n/4d - PRIVATE DEPARTURE

Accommodation	2-3 people	4-8 people	Single Supplement
Jaguar Flotel I or II	\$2285 USD	\$1990 USD	\$450 USD
Jaguar Suites	\$3600 USD	\$3200 USD	\$650 USD

JAG EXPRESS 2n/3d - FIXED DEPARTURE

Accommodation	2-3 people	4-8 people	Single Supplement
Jaguar Flotel I or II	\$1750 USD	\$1500 USD	\$350 USD
Jaguar Suites	\$2900 USD	\$2400 USD	\$450 USD

JAG EXPRESS 2n/3d - PRIVATE DEPARTURE

Accommodation	2-3 people	4-8 people	Single Supplement
Jaguar Flotel I or II	\$2100 USD	\$1800 USD	\$350 USD
Jaguar Suites	\$3100 USD	\$2600 USD	\$485 USD

Jaguar Extreme (6 nights/7 days)

Day 1: Meet SouthWild guide at Cuiabá Airport, lunch, depart from Cuiabá by 02:00 pm for 3-h-long transfer to SWP lodge. Trip Advisor lists SWP as #1 wildlife lodge on entire Transpantaneira Road. Late arrivals must pay for later transfers. Stops to observe abundant wildlife on Transpantaneira Road. Arrive SWP at 05:00-07:00pm. Dinner. Overnight SWP or similar.

Day 2: Observe abundant fauna around lodge, breakfast, and 07:00 am departure in open-sided, roofed Safari Truck or closed AC van to end of road at Porto Jofre. Stops on Transpantaneira to see wildlife; arrive end of road by 10:00 am to take search boats 16 km upstream to Jaguar Research Center Reserve. Lunch, 4-h boat outing, dinner, science lecture. Overnight SWJF I, II, or Jaguar Suites.

Days 3, 4, 5: Two 4-h boat outings per day search for Jaguars & Giant Otters on some of these river channels: Three Brothers, Black Channel, Cuiabá and Piquiri. B, L, D, science lecture. Overnight SWJF I, II, or Jaguar Suites.

Day 6: Breakfast, check-out, morning boat outing til 08:00-08:30 am, then boat transfer 16 km downstream to Porto Jofre and road transfer to SouthWild Pantanal Lodge in open Safari Truck or closed van or minibus. Lunch. Afternoon 2-h motorboat outing on the wildlife-rich Pixaim River. Dinner. After dinner, one hour spotlighting in our safari truck. Overnight SWP or similar.

Day 7: Observe fauna right around lodge, breakfast, depart at 07:00-08:00 am in closed, air-conditioned vehicle, noon arrival to Cuiabá Airport. Earlier departure costs more. No lunch included.



The Jaguar Express itineraries are designed to offer **FIFA World Cup Football (Soccer)** fans the chance to see Jaguars in the wildest heart of the Pantanal: The Jaguar Research Center Reserve.

The four Cup matches held in Cuiabá are on 13, 17, 21, and 24 June, the first three at 18:00h, and the last one at 16:00h Cuiabá time.

The late hour of the matches makes it easy to leave our SouthWild Pantanal Lodge at a comfortable 08:00am or 06:00am in the morning and drive 3-3.5 h out to Cuiabá. This transfer will arrive to Cuiabá at 11:30am (or 09:30am), 6 hours ahead of each match. Even a flat tire or car breakdown during the transfer would not cause problems for getting to Cuiabá many hours ahead of the match, as we will have additional company cars on standby at SouthWild Pantanal Lodge.

We believe that driving six hours from the Jaguar Flotels all the back to Cuiabá is long, tiring, and logistically risky. If a car breaks down near the distant end of the 145-km-long Transpantaneira Road, it would be hard to find another car on short notice.

The 25 June Jaguar Express Fixed Departure stays at SouthWild Pantanal Lodge on the first night, with the idea being that many World Cup fans might party late on the night of 24 June, the night of the last Cup match in Cuiabá. So that departure is scheduled to leave Cuiabá at 12:30h, and lunch is not included.

All other Jaguar Express Fixed Departures include lunch and dinner on the first day, three meals per day on the other full days with SouthWild, and only breakfast on the last morning.

8 June: Meet with your SouthWild guide at Taina Hotel by 08:00am. Departure in closed AC van to end of road at Porto Jofre. Take search boats 16 km upstream to Jaguar Research Center Reserve. Lunch, 4-h boat outing, dinner, science lecture. Overnight SWJF I, II, or Jaguar Suites;

9, 10, 11 June: Two 4-h boat outings per day in search of Jaguars & Giant Otters on some of these river channels: Three Brothers, Black Channel, Cuiabá and Piquiri. B, L, D, science lecture. Overnight SWJF I, II, or Jaguar Suites;

12 June: Breakfast and check-out, morning boat outing til 08:00-08:30 am, then boat transfer 16 km downstream to Porto Jofre and road transfer to SouthWild Pantanal Lodge in open Safari Truck or closed van or minibus. Afternoon 2-h motorboat outing on the wildlife-rich Pixaim River. Dinner. After dinner, one hour spotlighting in our safari truck. Overnight SWP or similar;

13 June: Observe fauna right around lodge, B, depart at 700-800 am in closed, air-conditioned vehicle, noon arrival to Cuiabá Airport. Earlier departure costs more. No lunch included.

**CHILE****VS****AUSTRALIA****13 June****18:00 - Cuiabá local time****19:00 - Brasília time**

**Arena Pantanal
Av. Dr. Agrícola Paes de Barros
Porto - Cuiabá - MT**

14 June (3 nights/4 days)

18 June (3 nights/4 days)



VS



17 June

18:00 - Cuiabá local time

19:00 - Brasília time

Arena Pantanal

Av. Dr. Agrícola Paes de Barros

Porto – Cuiabá – MT

14 or 18 June: Meet with your SouthWild guide at Taina Hotel by 08:00am. Departure in closed AC van to end of road at Porto Jofre. Take search boats 16 km upstream to Jaguar Research Center Reserve. Lunch, 4-h boat outing, dinner. Overnight SWJF I, II, or Jaguar Suites;

15 or 19 June: Two 4-h boat outings in search of Jaguars & Giant Otters on some of these river channels: Three Brothers, Black Channel, Cuiabá and Piquiri. B, L, D, science lecture. Overnight SWJF I, II, or Jaguar Suites;

16 or 20 June: Breakfast and check-out, morning boat outing til 08:00-08:30 am, then boat transfer 16 km downstream to Porto Jofre and road transfer to SouthWild Pantanal Lodge in open Safari Truck or closed van or minibus. Afternoon 2-h motorboat outing on the wildlife-rich Pixaim River. Dinner. After dinner, one hour spotlighting in our safari truck. Overnight SWP or similar;

17 or 21 June: Drive from SouthWild Pantanal Lodge to Cuiabá. Observe fauna right around lodge, B, depart at 07:00-08:00 am in closed, air-conditioned vehicle, noon arrival to Cuiabá Airport. Earlier departure costs more. No lunch included.

22 June (2 nights/3 days)



BOSNIA

VS



NIGERIA

21 June

18:00 - Mato Grosso local time

19:00 - Brasília Oficial time

Arena Pantanal

Av. Dr. Agrícola Paes de Barros

Porto - Cuiabá - MT

22 June: Meet with your SouthWild guide at Taina Hotel by 08:00am. Departure in closed AC van to end of road at Porto Jofre. Take search boats 16km upstream to Jaguar Research Center Reserve. Lunch, 4-h boat outing, dinner, science lecture. Overnight SWJF I, II, or Jaguar Suites;

23 June: Two 4-h boat outings search for Jaguars & Giant Otters on some of these river channels: Three Brothers, Black Channel, Cuiabá and Piquiri. Boat transfer 16 km downstream to Porto Jofre and road transfer to SouthWild Pantanal Lodge in open Safari Truck or closed van or minibus. Arriving for dinner. Overnight SWP or similar;

24 June: Observe fauna right around lodge, breakfast, depart at 06:00-07:00 am in closed, air-conditioned vehicle, noon arrival to Cuiabá Airport. Earlier departure costs more. No lunch included.

**COLOMBIA****VS****JAPAN****24 June****16:00 - Cuiabá local time****17:00 - Brasília Oficial time****Arena Pantanal****Av. Dr. Agrícola Paes de Barros****Porto – Cuiabá – MT**

25 June: Meet with your SouthWild guide at Taina Hotel by 12:30pm. Departure in closed AC van to SouthWild Pantanal Lodge. Afternoon 2-h motorboat outing on the wildlife-rich Pixaim River. Dinner. After dinner, one hour spotlighting in our safari truck. Overnight SWP or similar;

26 June: Observe abundant fauna around lodge, breakfast, and 7 am departure in open-sided, roofed Safari Truck or closed AC van to end of road at Porto Jofre. Stops on Transpantaneira to see wildlife; arrive end of road by 10 am to take search boats 16km upstream to Jaguar Research Center Reserve. Lunch, 4-h boat outing, dinner, science lecture. Overnight SWJF I, II, or Jaguar Suites;

27, 28 June: Two 4-h boat outings search for Jaguars & Giant Otters on some of these river channels: Three Brothers, Black Channel, Cuiabá and Piquiri. Boat transfer 16 km downstream to Porto Jofre and road transfer to SouthWild Pantanal Lodge in open Safari Truck or closed van or minibus. Arriving for dinner. Overnight SWP or similar;

29 June: Breakfast and check-out, morning boat outing til 08:00-08:30am, then boat transfer 16 km downstream to Porto Jofre and road transfer to SouthWild Pantanal Lodge in open Safari Truck or closed van or minibus. Lunch. Afternoon 2-h motorboat outing on the wildlife-rich Pixaim River. Dinner. After dinner, one hour spotlighting in our safari truck. Overnight SWP or similar;

30 June: Observe fauna right around lodge, B, depart at 700-800 am in closed, air-conditioned vehicle, noon arrival to Cuiabá Airport. Earlier departure costs more. No lunch included

Included:

- ✓ Comfortable, air-conditioned, shared or private transport service between Cuiabá and SouthWild attractions.
- ✓ Open Safari Truck for shared or private transfers service between SouthWild Pantanal and end of Transpantaneira Road. This low-speed, open-air drive may be dusty or rainy, so bring plastic bags to protect cameras.
- ✓ Nights in double accommodation as described in each itinerary.
- ✓ 3 meals per day according to the described itinerary.
- ✓ Shared or private activities in SouthWild Pantanal Lodge: walk in our scientifically-designed trail system; access to our observation towers on river and at Jabiru Stork nest; 1 horseback ride or 1 boat ride per day (2-hour maximum) at times agreed upon with the SouthWild team and according to the itinerary.
- ✓ Shared or private boat outings at Jaguar Research Center Reserve. One group may use several boats with the single SouthWild guide rotating from boat to boat.
- ✓ Predeparture information, including a list of all the 180 commonly-seen bird species of the Pantanal floodplain, *sensu strictu*.
- ✓ Shared or private SouthWild-trained, English-speaking guide, with SouthWild iPad with our in-house photo guide to all 400 bird species of the Pantanal and other unique SouthWild information.
- ✓ Unique, 2-metre-wide, bendable (“articulated”) sun umbrellas that fit into unique SouthWild umbrella slots on SouthWild Jaguar observation boats. Only SouthWild uses these umbrellas, as they are the best option for shade, because the pole is in the middle of the boat and thus does not have side struts or posts to ruin Jaguar photography. Bendable because from 7-10 am and from 2:30-5:30 pm, the sun slants in from the sides, not the top. We thought about this problem a lot.

✓ At Jaguar Research Center Reserve, three radio-equipped boats on the river for most of each day, regardless of how few guests are staying with us. No other operator makes this expensive commitment.

✓ Free WIFI internet at SouthWild Pantanal Lodge, SouthWild Jaguar Flotel I and Jaguar Suites whenever weather permits (about 90% of the time). Internet open to all SouthWild guests, even if on Flotel II or on the Plaza or the Caribe, long-stay ships.

✓ Unlimited free drinking water in large coolers at SouthWild Pantanal Lodge and at all SouthWild Fhotels. Bring nalgene or metal water bottle to refill for free. Help to reduce plastic rubbish.

✓ For private package, exclusive guide throughout the entire tour. Private walks and boat outing. Size of Jaguar safari boats vary. Only transfers between Porto Jofre and Jaguar Fhotels may be shared.

Not Included:

✓ Not included: Lunch on last day, soft drinks, small bottles of water, beer, wine, mixed drinks, laundry, tips, insurance, early or late transfers from/to Cuiabá for any reason, or air tickets.

Important notice about scheduling flights:

For Fixed Departures, only:

Flight schedule notice: Please land in Cuiabá no later than 12:30h, the group will leave no later than 02:00PM. If your flight is delayed, you will have to pay for separate private transport without SouthWild guide, and most likely your driver will speak only Portuguese.

Please do not schedule a departure flight from Cuiabá for earlier than noon. Later arrivals or earlier departures will require separate transfers at additional cost.

The return from SouthWild Pantanal Lodge is at 06:30am, which is ideal for flights leaving Cuiabá after or after 11:00am. Guests with later flights are welcome to relax in our air-conditioned SouthWild office and use WIFI. The office is only a 6-minute walk or 3-minute drive from the airport.



SouthWild Jaguar Flotel

Jaguars Guaranteed Since 2006
www.southwild.com



SouthWild LLC

620 Chestnut Street, Suite 668
Philadelphia, PA 19106 – USA

Hotel Fazenda Santa Tereza – LTDA

SouthWild Brasil

Travessa Liberdade, 70
Várzea Grande – MT – Brazil
CEP 78110-308